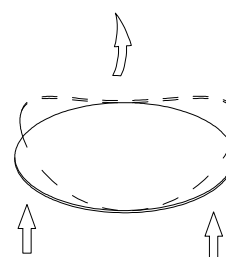
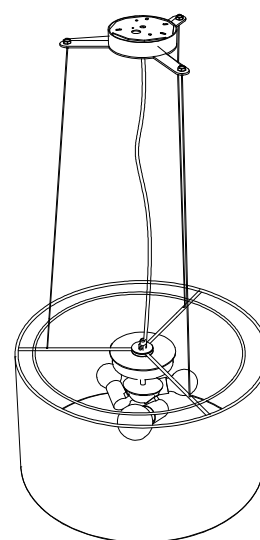
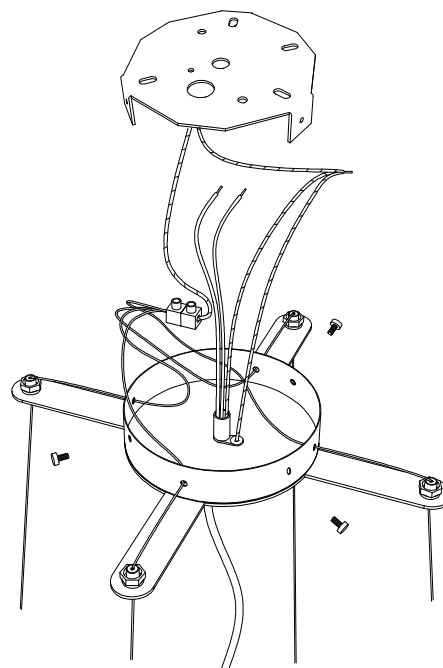
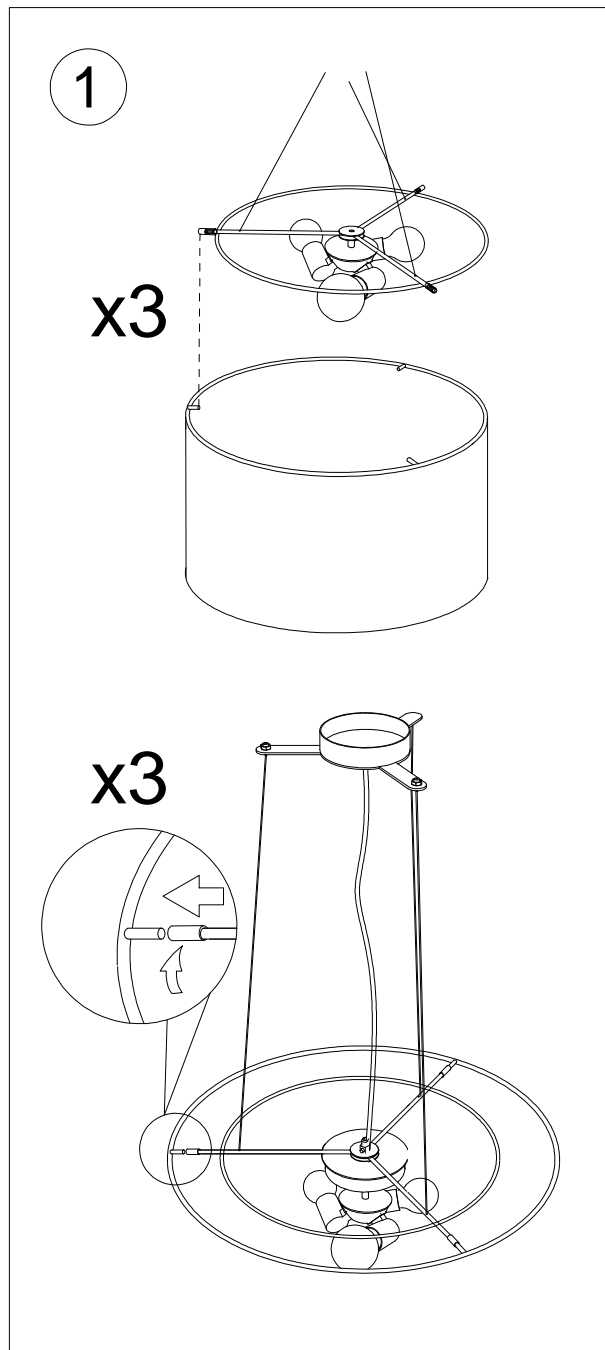


ISTRUZIONI INSTALLAZIONE - INSTALLING INSTRUCTIONS - INSTRUCTIONS DE MONTAGE

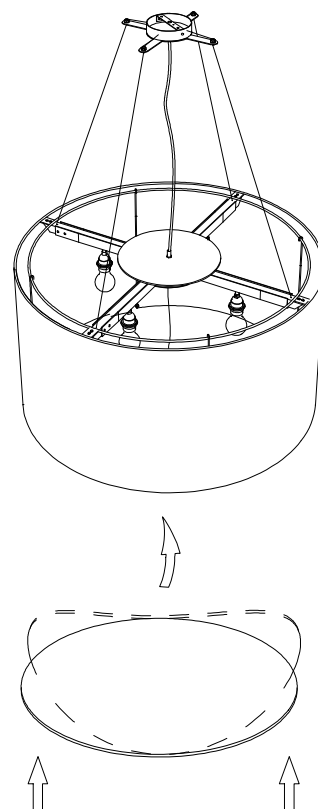
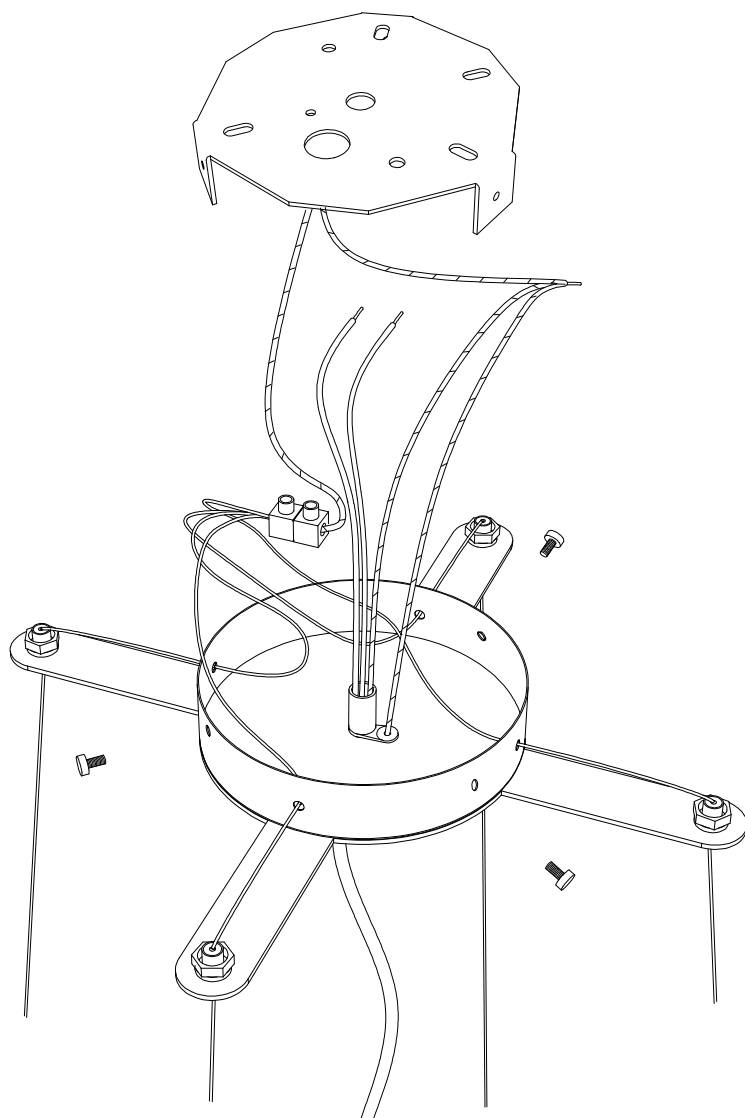
CAUTION : BEFORE STARTING, TURN OFF POWER OF MAIN CIRCUIT PANEL



CIRCUS 50-75

ISTRUZIONI INSTALLAZIONE - INSTALLING INSTRUCTIONS - INSTRUCTIONS DE MONTAGE

CAUTION : BEFORE STARTING, TURN OFF POWER OF MAIN CIRCUIT PANEL



CIRCUS 90 - 120 - 150