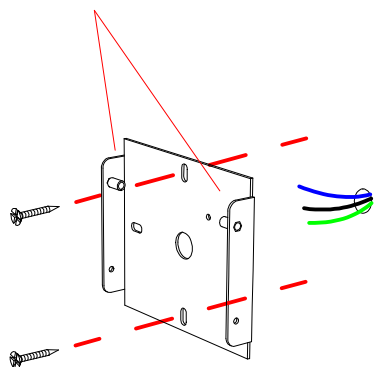
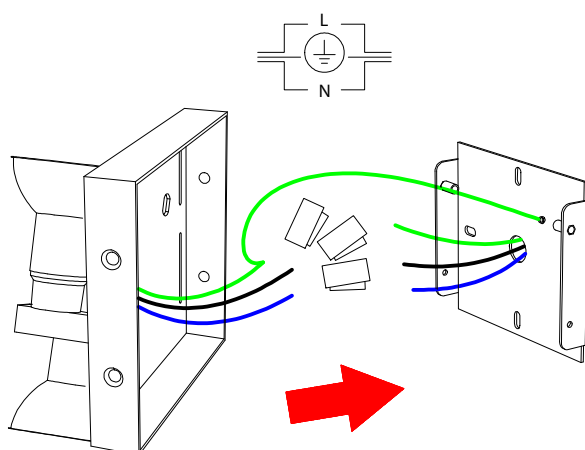


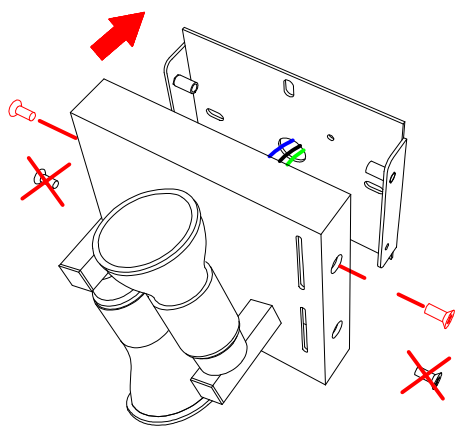
Place the bracket
with the pins upward



1 Fix the bracket on the JBOX

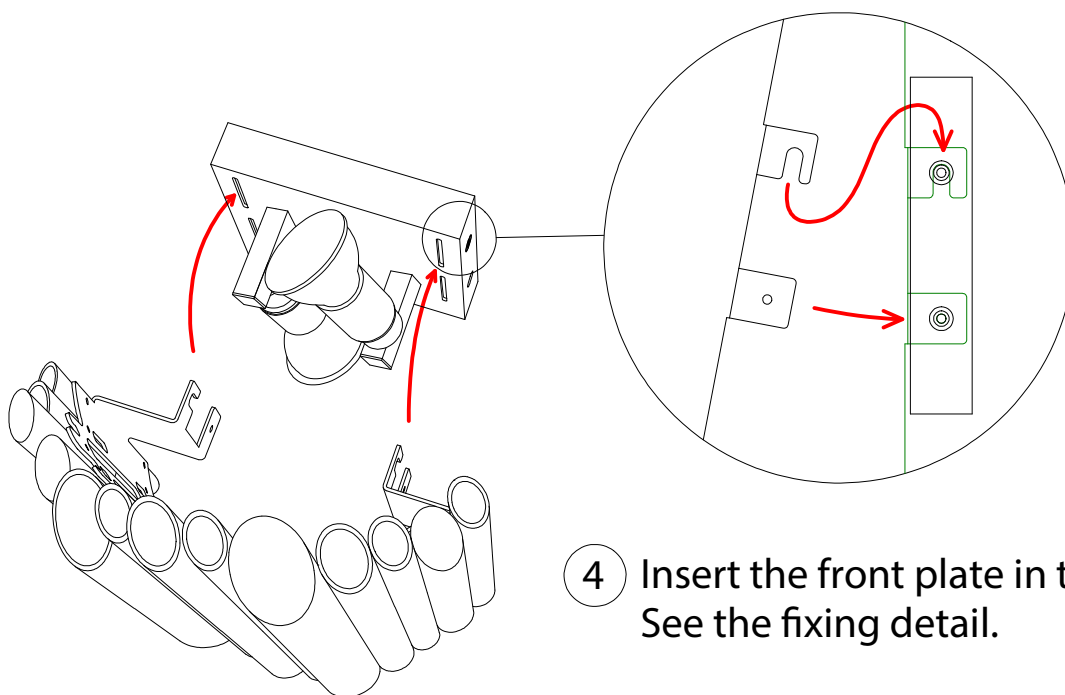


2 Connect the lamp to the main power following the sketch.

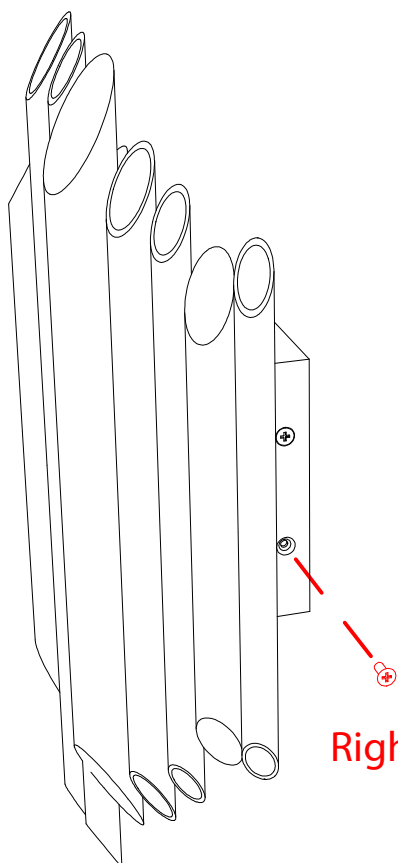


3 Fix the base to the bracket
ONLY WITH THE UPPER SCREWS

Fixing detail



- 4 Insert the front plate in the loops.
See the fixing detail.



- 5 Fasten the lamp fixing the other
two lower screws.

Right and left